



The Park^{MK}

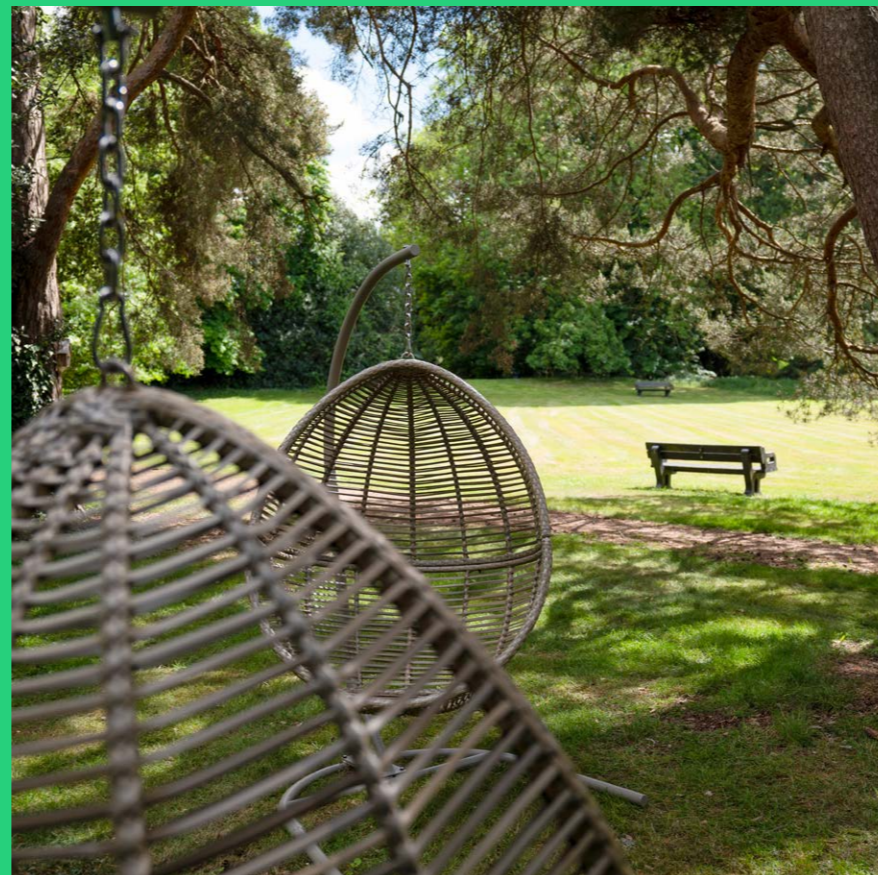
An exceptional place to work

The park that means business

The Park MK offers an environment that allows its customers and their staff to thrive.

We are a people place. A community supported by companies who value their employees and understand the importance of social collaboration.

A place where curious and brilliant minds can meet, work, think and relax.



Thinking space

A 150,000 sq ft business park across 16 green acres providing a vibrant backdrop for UK and globally renowned companies.

Current occupiers include:



Buildings

- 1 Enigma
- 2 Wavendon Tower
- 3 Cobra
- 4 Turing
- 5 Victory





Park yourself



Beyond the office

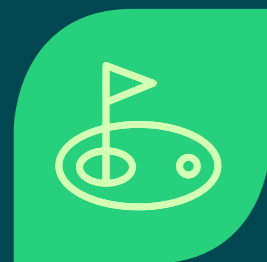
The Park MK is more than your standard business park - we've curated a dynamic working environment that benefits all of our customers. Come to us for high spirits and zen, strolls and HIIT classes, picnics and charity events. And a fair amount of ice-cream giveaways.



Cycle facilities



Year round events programme



All-weather putting green



Outdoor meeting/breakout seating



Buildings

- 1 Enigma
- 2 Wavendon Tower
- 3 Cobra
- 4 Turing
- 5 Victory

Amenities

- Cycle Facilities
- EV charging
- Café
- Main Lawn & Event Area
- Lawn Games
- Table Tennis
- Putting Green
- Woodland Walk
- Zen Zone
- Seating Areas



Central perk

A vibrant and welcoming environment that works hard for you.



Café

Run by the well-loved local operator Really Awesome Coffee, the café is the hub of the park and helps fuel customers with a full range of hot drinks and lunch options. Meeting catering also available.



Breakout, chill & event space

We encourage all customers to explore the grounds and provide ample seating for you to take your meetings outside. Spaces can be booked for private events, such as team building or celebrations. The newly created 'Zen Zone' allows for time away from the office to relax.



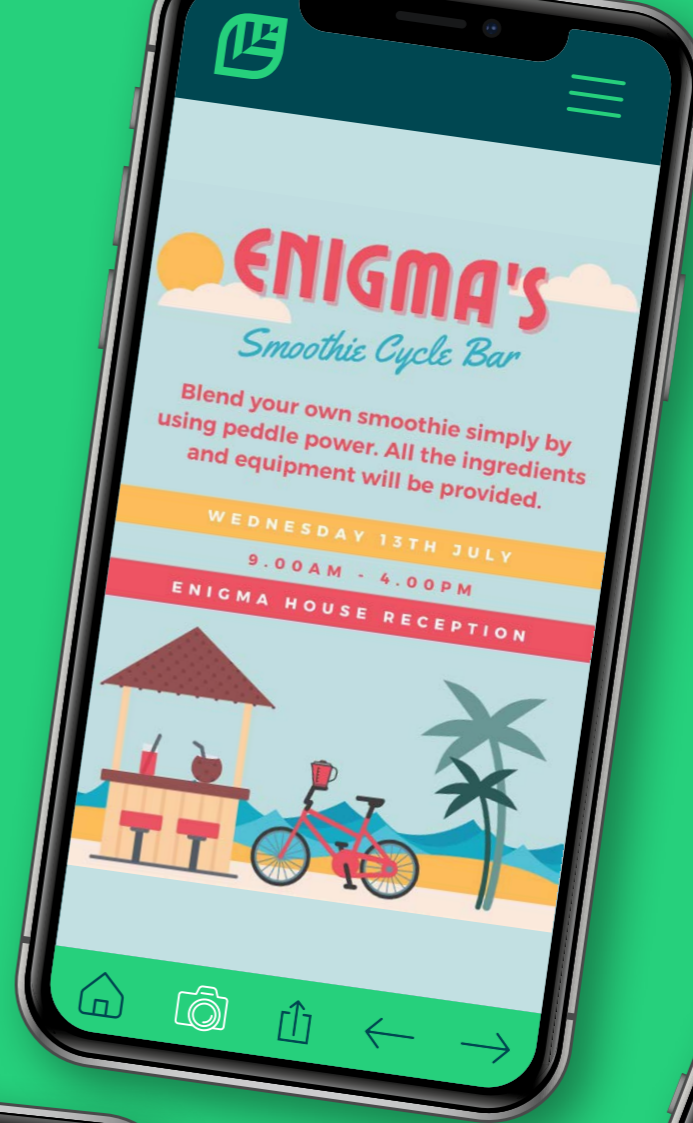


Community



Event-full

The Park MK's community team organise a wide range of food, entertainment and sporting events throughout the year - engaging with customers through the park's app.



Mind, body & soul

Get motivated and get moving. Led by feedback from customers, we have a year-round programme of events, activities and workshops to help our workplace community get the most out of being "in the office".

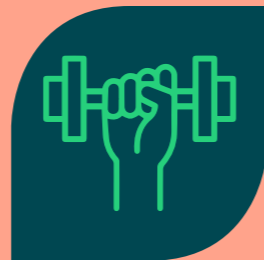


Woodland walk

Our grounds host wonderful mature trees and we have created a trail just off the main lawn for customers to explore. Log piles are left as natural habitats to support the woodland eco system and there are plenty of bird boxes available. It's the perfect place to refocus and connect with nature.



The Park MK's inaugural 5-a-side football tournament



Wednesday Workouts

All customers are invited to our weekly fitness sessions. Led by a personal trainer, we try different exercises each week such as kettle bells, circuits, boxing and running. Our aim is to incorporate healthy activity into customers' working week and to promote an active lifestyle.



Sports & games equipment

Our community has a competitive edge! The all-weather putting green and table tennis area are for all to enjoy - ideal for team building or a simple lunchtime game. We also have a great selection of lawn games, such as badminton, giant jenga, frisbee, football, croquet and boules.



Future proofed

Being sustainable and socially conscious are key components of The Park MK's philosophy.

We are investing in infrastructure throughout the grounds, such as additional EV charging points, enhanced cycle facilities and external WiFi. We are also proactive in promoting best practise for waste and recycling collections, wellness initiatives, sustainable travel and cultural diversity.



Partners

We see our tenants as partners & customers with whom we build long-standing relationships.



Planet

We are creating a workplace environment that works for business, but ones that also works for our planet.



Green energy supplier



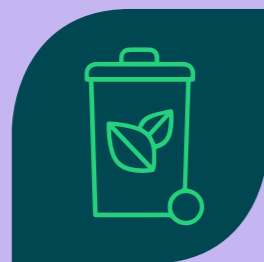
EPC A achieved



Targeting Wiredscore Gold



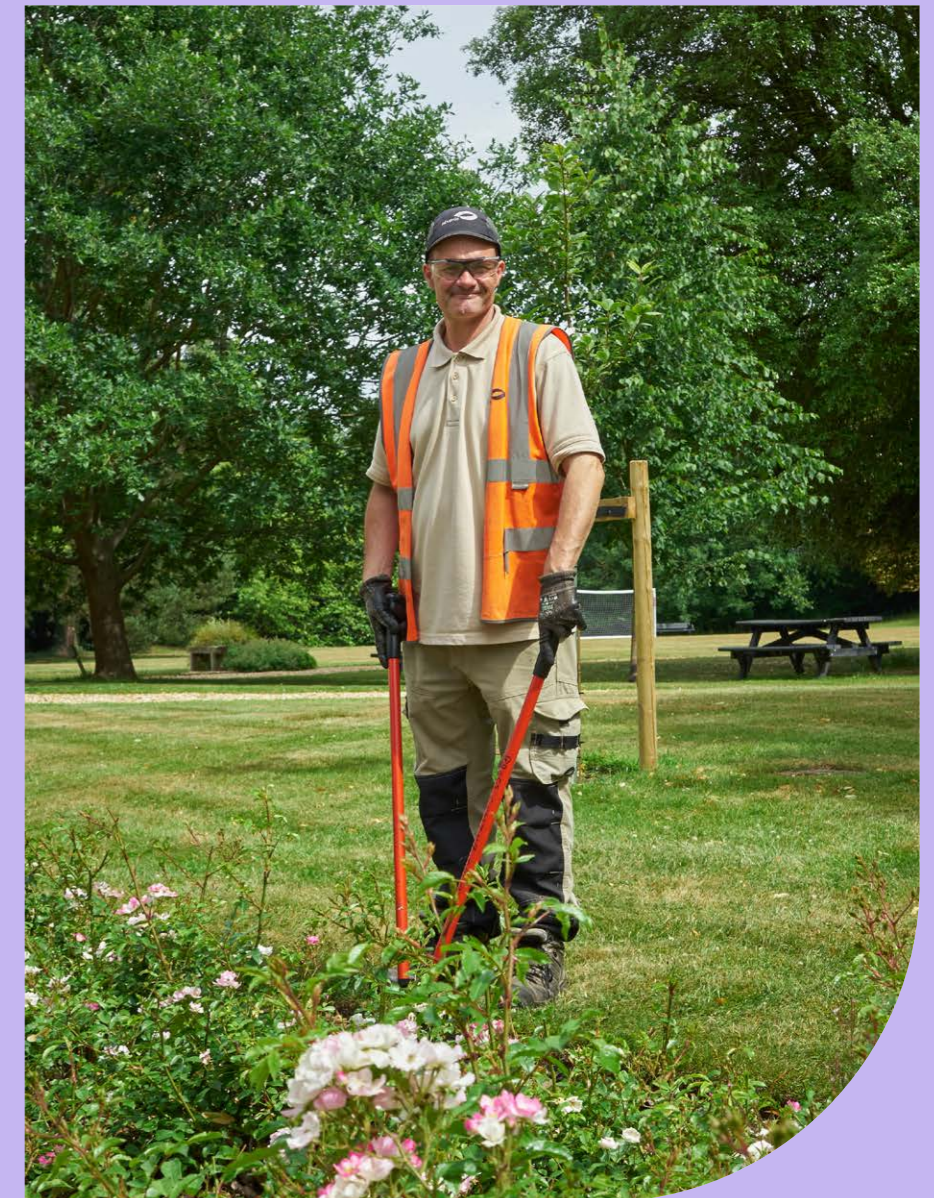
Sustainable giveaways to reduce plastic waste



100% green waste turned into compost, including coffee grounds



EV charging points



Green keepers

Proud of the site's heritage, we are keen to ensure it lasts for generations to come. In the last six months we planted 420 new plants and have seeded many areas with wildflowers. You'll see a variety of bird boxes on the trees as well as log piles, bug hotels and bat boxes all supporting and enhancing the biodiversity of the park.



Customer herb garden



Dedicated planting & biodiversity team



16 acres of green landscaping



Enhanced biodiversity





The City of MK



Central park

The Park MK is connected - with easy access to major travel routes nationwide.

Sat Nav Ref: MK17 8LX



Key train station and airports times from The Park MK*

*Google Maps



Distance (mile) Time (mins)

The Park MK to Bletchley station	5	12 (drive)
London Euston to Bletchley station	49	40 (direct)
The Park MK to Milton Keynes station	5	14 (drive)
Milton Keynes to London Euston station	53	35 (direct)



Distance (mile) Time (mins)

The Park MK to Luton Airport	22	35
The Park MK to Heathrow Airport	51	1hr
The Park MK to Birmingham Airport	59	1hr 15
The Park MK to Stansted Airport	63	1hr 20



M1 drive times from The Park MK*

*Google Maps

9 mins

Junction 14 (4 miles)

10 mins

Junction 13 (5 miles)



MK... a smart city

Milton Keynes consistently ranked at the top of economic benchmarking surveys, with a thriving business mix from future-forward start-ups to leading global players.

Platinum status



As part of the Queen's Platinum Jubilee celebrations Milton Keynes officially become a city.

One of the UK's fastest growing cities, and at the heart of the Cambridge - Milton Keynes - Oxford arc (an area of national and international importance with exceptional growth potential). MK and the surrounding area offers people a great place to live and work - with over 14,000 businesses who have chosen to locate here.



Super connected

Britain's fastest fibre optic network offering up to 1,000 mbps. Full fibre connections are now a policy requirement for all new developments within Milton Keynes.

Local economy



Growth
4th fastest growing economy over the next 12 months.



Population
MK's population is projected to exceed 300,000 by 2027, with the demographic weighted towards the young and working age brackets.



Oxford - Milton Keynes - Cambridge Arc
Identified by the government as a strategic economic priority due to its world-class research, innovation and technology.



City status
Milton Keynes was one of the winners of City Status as part of the 2022 Platinum Jubilee Civic Honours competition.



Infrastructure
East West Rail Phase One from Oxford to Milton Keynes is due to be operational by 2025.

Tech hub



Education
Home to MK:U, the UK's first university focused specifically on technology, engineering and science courses.



Central HQ
Approximately 800 International firms have chosen Milton Keynes as a base with 75% of those being HQs.



Start it up
Top 10 City for start-ups in the UK, with new business growth of 27% between 2016-2020, ahead of London.



UK top five
MK is recognised as the national hotspot for entrepreneurial activity and ranks in the UK's top five for concentration of high tech and digital SMEs.



Out and about

At MK, you won't be disappointed. Centre: MK provides an excellent spot for a bit of retail therapy. The Hub thrives with restaurants and cafés. Thrill seekers are spoilt - indoor sky-diving, ice-skating, indoor snow sports, rock climbing and all manner of water sports.

Art lovers dwell in MK Gallery, music fans gravitate to The Stables and MK Theatre hosts west-end productions. Tee off at Woburn Golf Club and - of course - we support the MK Dons.



Further information



James Shillabeer
jameshillabeer@brayfoxsmith.com
+44 7824 663 594

Ian Leather
ianleather@brayfoxsmith.com
+44 7860 612 242



Andrew Willcock
awillcock@savills.com
+44 7870 999 628

Florence Horner
florence.horner@savills.com
+44 7870 999 255

Work space by:

Colmore Capital

theparkmk.co.uk

Misrepresentations Act 1967 - Whilst all the information in this brochure is believed to be correct, neither the agent nor the client guarantee its accuracy nor is it intended to form any part of any contract. All areas quoted are approximate. March 2024.



theparkmk.co.uk

